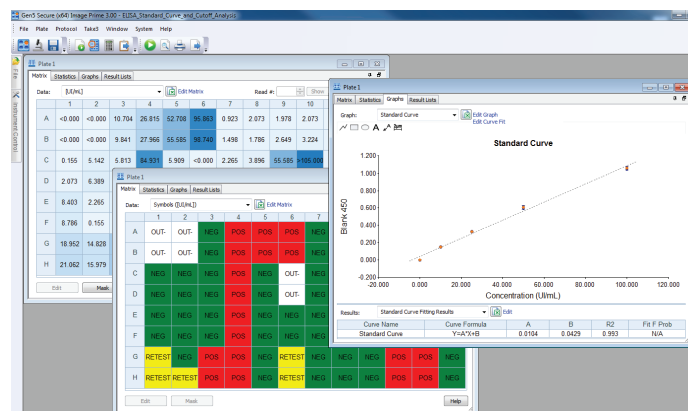


800™ TS Absorbance Reader

The 800 TS Absorbance Reader is an affordable, high quality microplate reader for assays in 6- to 384-well formats. The color touchscreen provides a visual user interface, making programming simple. The onboard software includes “quick read” and custom protocols, with data viewed immediately after measure, followed by export to USB or to the compact printer. The software stores a history of programmed assays and recent plate readings for instant recall. The 800 TS can be configured to include temperature control and shaking, ideal for assays like short- or long-term kinetics, enabled under computer control via Gen5 Software. The 800 TS, used alongside the 50 TS Washer, makes an affordable system to automate many application workflows, including immunoassays, cytotoxicity, enzyme assays, cell-based assays and more.



800 TS can be controlled by Gen5 software for extensive data analysis.



Features:

- Versatile for many applications, including ELISA, protein and other end point assays, plus kinetics and cell-based assays
- Color touchscreen for quick programming and simple operation
- USB flash drive for convenient data export, Gen5 import for analysis
- High precision and accuracy for reliable results
- Durable and high quality design from BioTek, the #1 microplate reader brand

Typical Applications:

- ELISA
- Protein assays
- Cytotoxicity assays
- Kinetic ELISA

Configurations:

800TS:	6- to 96-well plates, 400 to 750 nm detection, shaking
800TSI:	6- to 96-well plates, 400 to 750 nm detection, temperature control and shaking
800TSUV:	6- to 96-well plates and 340 to 750 nm detection, shaking
800TSUVI:	6- to 96-well plates and 340 to 750 nm detection, temperature control and shaking
800TSNB:	6- to 384-well plates and 400 to 750 nm detection

See website or price list for configurations and descriptions.

Optional Accessories:

- Gen5™ Microplate Reader and Imager Software
- Gen5™ Secure (for 21 CFR Part 11 Compliance)
- Absorbance Test Plate
- Product Qualification Package
- Printer
- Quantitative Assay Apps: Bradford, Lowry, BCA protein assays



BioTek's 800™ TS Reader is ideal for pairing with 50™ TS Washer for routine workflows.

Technical Details:

General

Detection modes:	Absorbance
Read methods:	End point. Kinetic, well area scanning (under computer control)
Microplate types:	6- to 384-well plates
Temperature control:	To 50 °C ("I" configuration)
Shaking:	Yes (except 800TSNB)
Read speed:	11 secs /96 wells (sweep mode)
Software:	Gen5 Reader Control Software Gen5 Microplate Reader and Imager Software (optional)

Absorbance

Light source:	Tungsten halogen
Wavelength selection:	Filters
Wavelength range:	400 – 750 nm 340 – 750 nm ("UV" configurations)
Dynamic range:	0 to 4.0 OD (normal and rapid read modes) 0 to 3.0 OD (sweep read mode)
Resolution:	0.001 OD (standalone mode) 0.0001 OD (via Gen5 control)
Filter wheel capacity:	5 positions
Filters supplied:	405, 450, 490, 630 340, 405, 450, 490, 630 ("UV" configurations)

OD accuracy (96-well)	Normal read mode	± 1.0% ± 0.010 OD from 0.000 to 2.000 OD @ 405 nm ± 2.0% ± 0.010 OD from 0.000 to 2.000 OD @ 340nm
	Rapid read mode	± 2.0% ± 0.020 OD from 0.000 to 2.000 OD @ 405 nm ± 2.5% ± 0.020 OD from 0.000 to 2.000 OD @ 340nm
	Sweep read mode	± 1.0% ± 0.020 OD from 0.000 to 1.000 OD @ 405 nm
OD linearity (96-well)	Normal read mode	± 1.0% ± 0.010 OD from 0.000 to 2.000 OD @ 405 nm ± 3.0% ± 0.010 OD from 2.000 OD to 3.000 OD @ 450 nm ± 2.5% ± 0.010 OD from 0.000 to 2.000 OD @ 340nm
	Rapid read mode	± 2.0% ± 0.010 OD from 0.000 to 2.000 OD @ 405 nm ± 2.5% ± 0.010 OD from 0.000 to 2.000 OD @ 340nm
	Sweep read mode	± 1.0% ± 0.010 OD from 0.000 to 1.000 OD @ 405 nm ± 1.0% ± 0.010 OD from 0.000 to 1.000 OD @ 340 nm
OD repeatability (96-well)	Normal read mode	± 0.5% ± 0.005 OD from 0.000 to 2.000 OD @ 405 nm ± 1.5% ± 0.005 OD from 0.000 to 2.000 OD @ 340nm
	Rapid read mode	± 1.0% ± 0.010 OD from 0.000 to 2.000 OD @ 405 nm ± 2.0% ± 0.020 OD from 0.000 to 2.000 OD @ 340nm
	Sweep read mode	± 2.0% ± 0.020 OD from 0.000 to 1.000 OD @ 405 nm

Physical Characteristics

Connectivity:	1 USB port for computer control, 1 USB port for printer.
Power:	External 24VDC power supply compatible with 100-240VAC @ 50-60 Hz. Power consumption: 40 Watts; 150 Watts incubated configurations
Dimensions:	16.5x15x7 inches (419 x 381 x 178 mm)
Weight:	<22 lbs (9.97 kg)

Regulatory

CE and TUV marked. For *In Vitro* Diagnostic use.

Technical details are subject to change.



BioTek
BioTek Instruments, Inc.
Highland Park, P.O. Box 998
Winooski, Vermont 05404-0998, USA

Phone: 802-655-4040 • Toll-Free: 888-451-5171
Outside the USA: 802-655-4740
www.biotek.com